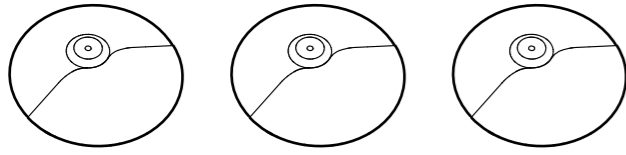
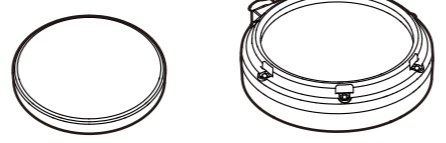
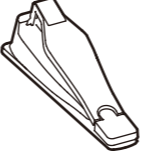
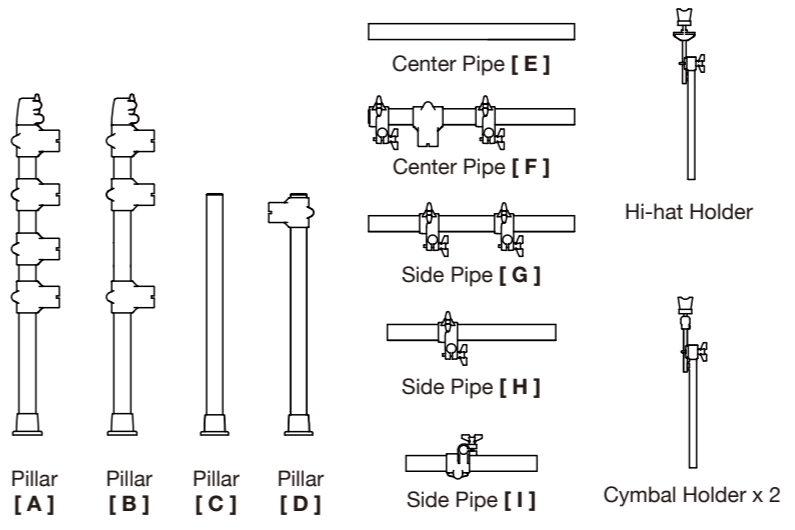
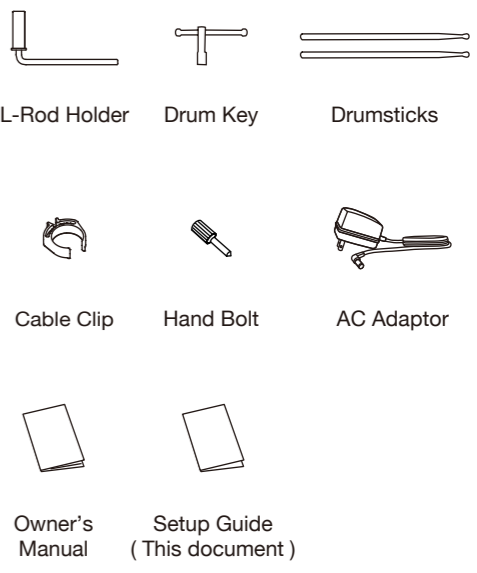
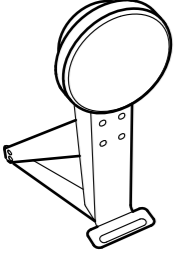
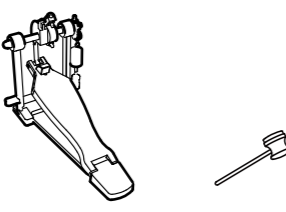
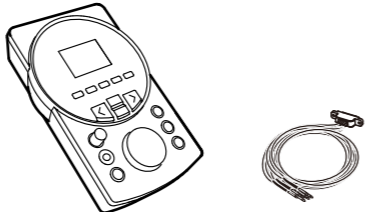



Setup Guide

WARNING:

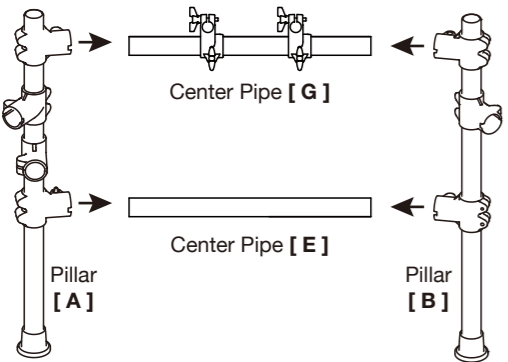
- Drum key may pinch your fingers. Be careful when adjusting clamps with drum key.
- Mind the sharp ends, such as pipe ends and screw ends. They may injure your fingers.

Check the included items

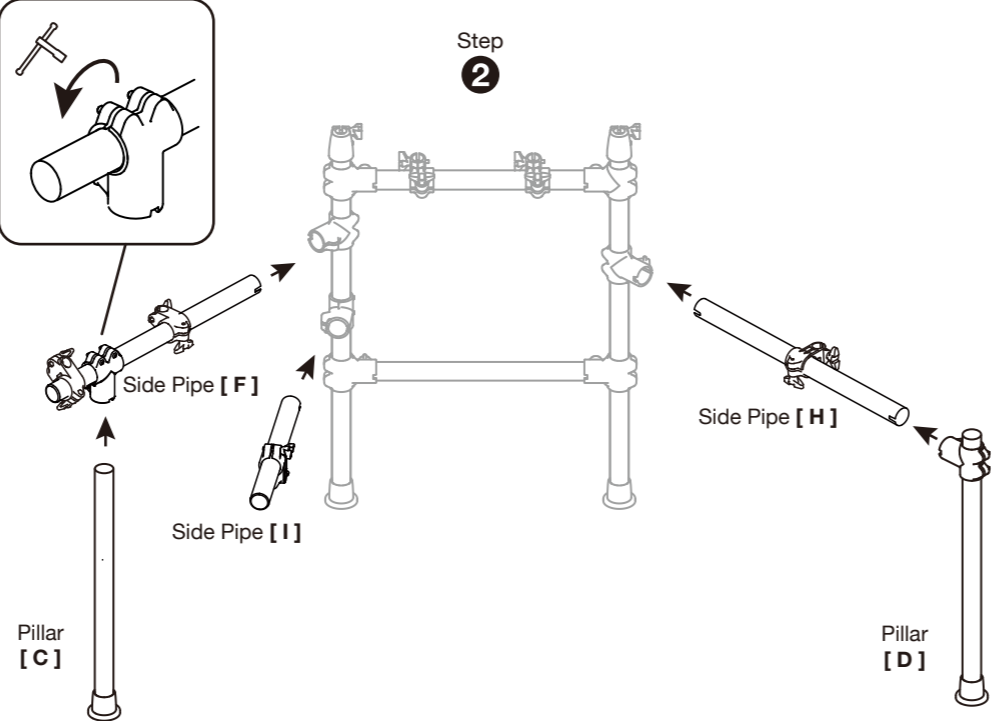
CYMBAL PAD  Hi-hat Crash Ride	DRUM PAD  Tom 1 / Tom 2 / Tom 3 (x 3) Snare	PEDAL  Pedal (Hi-hat)	DRUM STAND  Pillar [A] Pillar [B] Pillar [C] Pillar [D] Center Pipe [E] Center Pipe [F] Side Pipe [G] Side Pipe [H] Side Pipe [I] Hi-hat Holder Cymbal Holder x 2	ACCESSORIES  L-Rod Holder Drum Key Drumsticks Cable Clip Hand Bolt AC Adaptor Owner's Manual Setup Guide (This document)
KICK PAD  Kick Pad	KICK PEDAL  Kick Pedal Beater	MODULE  Drum Module Connection Cable	MINI PAD  Mini Pad (x 2)	

Assemble the Drum Stand

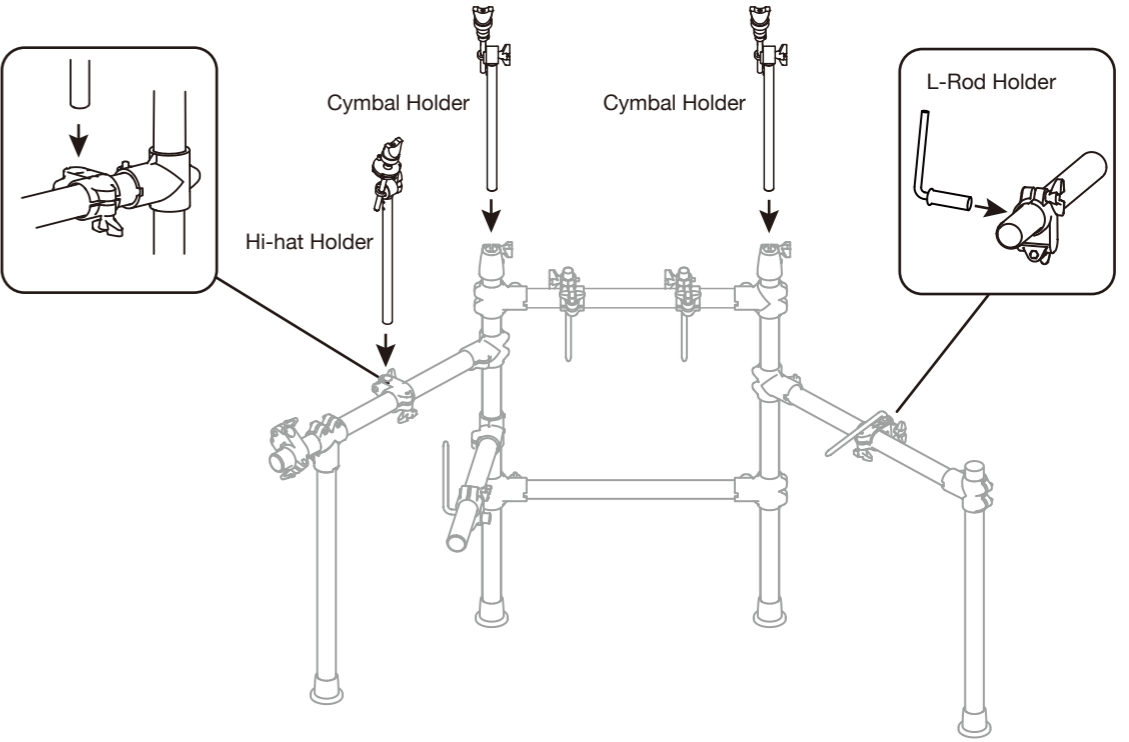
Step 1



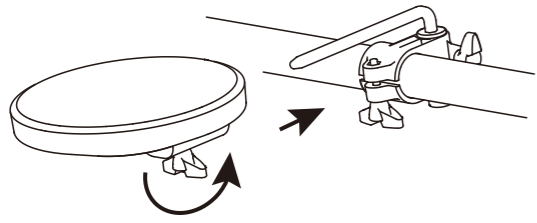
Step 2



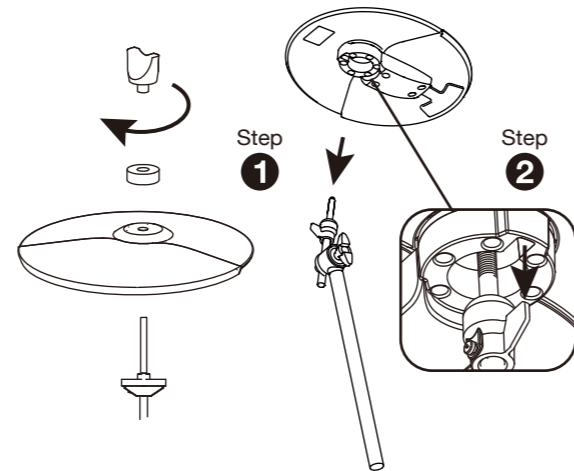
Attach the Pad, Hi-hat and Cymbal Holders



Attach the Drum Pad



Attach the Cymbal Pad



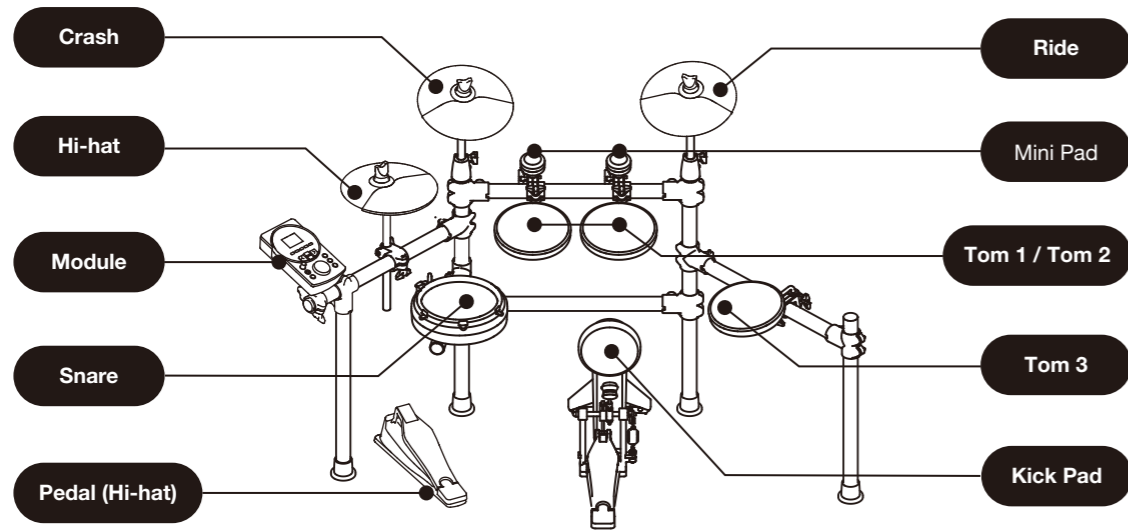
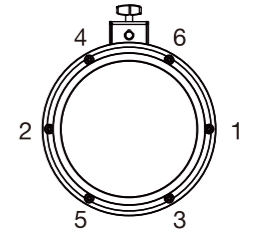
Adjust the Head Tension of Snare

Please adjust the head tension before you start to perform. By adjusting the head tension, you can make the pad respond to your strikes, just like playing an acoustic drum.

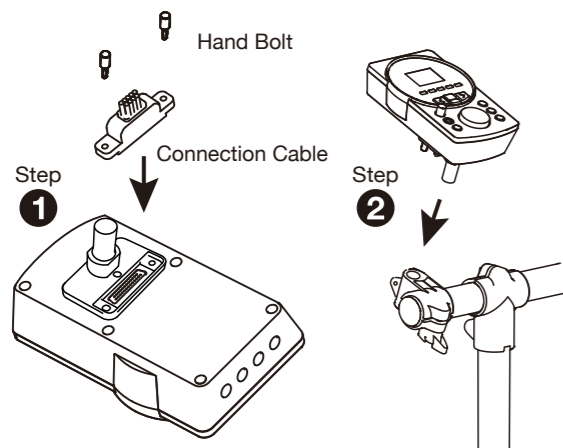
1. Follow the order indicated in the image. Turn each tension bolt around the head little by little.
2. Adjust the tightness of each bolt so as to make the pad tension even.

Notes:

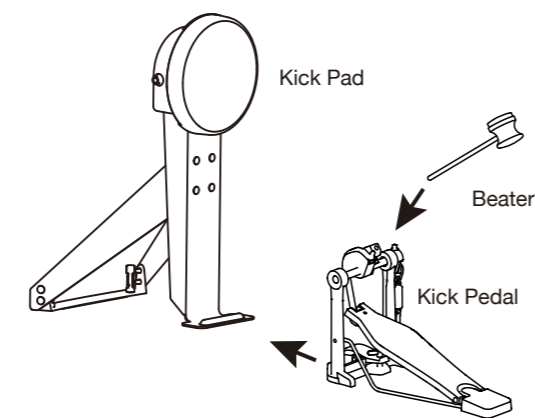
1. Always adjust each tension bolt little by little. Turning the bolts too much at one step may result in uneven head tension.
2. The head tension may change after using for some time. Please adjust the head tension whenever it is necessary.



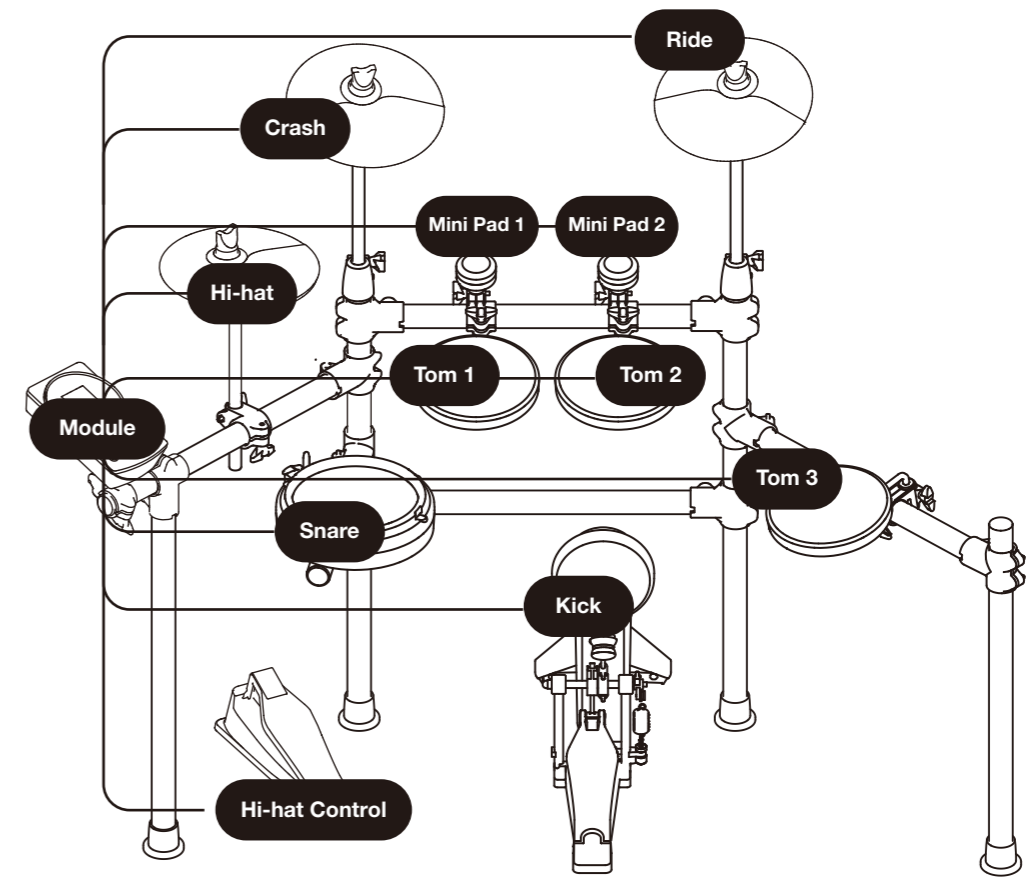
Attach the Module



Attach the Kick Pad



Connect the Pads



Connect the Pads to the Module with labelled cables.